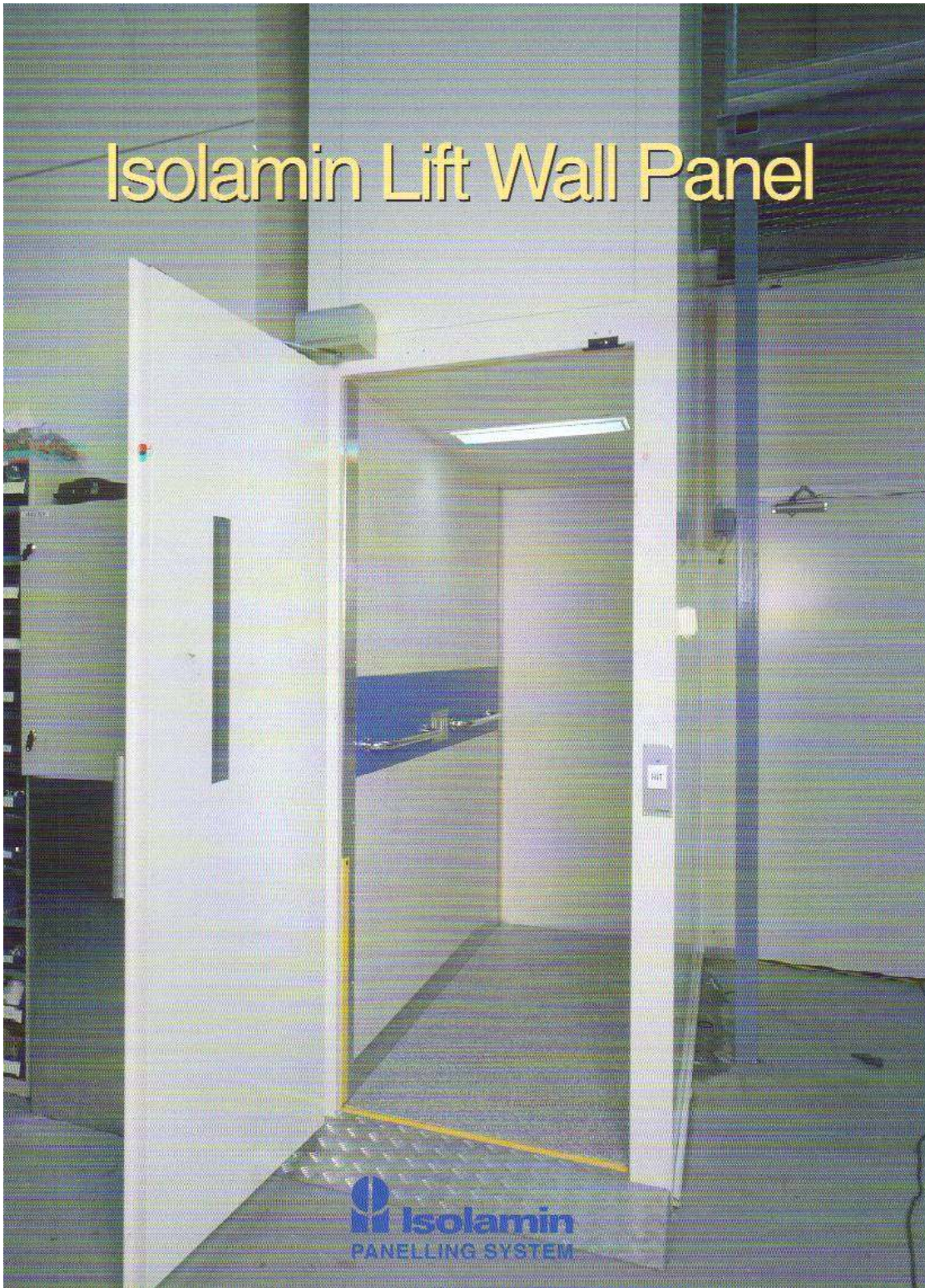



Isolamin Lift Wall Panel



 **Isolamin**
PANELLING SYSTEM

Isolamin Panelling System

- cuts assembly time to one-fifth



Isolamin Panelling System is an easy-to-assemble construction system for fast indoor construction in industrial buildings and other types of buildings. The assembly time is cut to one-fifth compared with standard walls built on-site. Less on-site labour is needed and construction time is reduced. Isolamin Panelling system comes in the form of a complete kit with length dimensions to suit the order. Together with the excellent design/specification service we have set up, the procurement of the indoor building work becomes very simple and reliable.

Sound insulation into the bargain

All Isolamin wall elements have good sound insulating properties. On the most commonly used wall types, the sound reduction is 30-35 dB la Lab.

Ample choice of surface materials and colours

The surface material can be PVC film-covered, painted or untreated galvanised sheet steel. Stainless steel sheet is also available.



Walls

Isolamin's patented jointing system, a method for combining mineral wool and sheet steel to form strong wall elements, is the basis on which the wall elements are manufactured. The wall elements consist of two steel sheets bonded to high-strength transversely-positioned mineral wool.

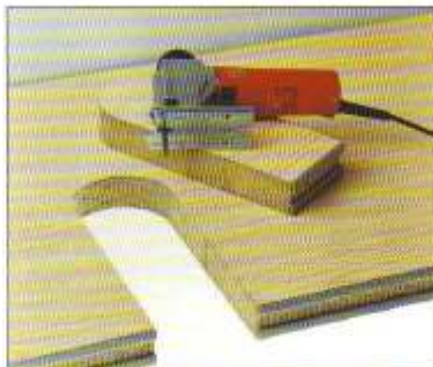
The result is an exceptionally strong sandwich element, fire-classified or fire-evaluated and with high sound reduction.

Assembly profiles

All the fittings needed for assembly are included in the system. The fittings are coated with any film chosen from the range of colours.

Design service

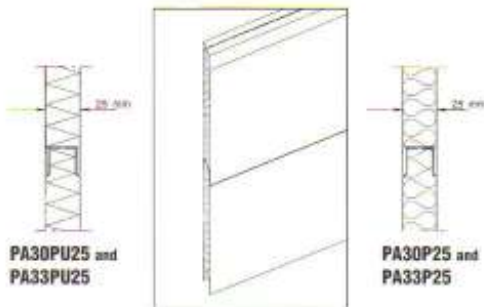
We have a versatile design service, including a building catalogue bursting with information, and AutoCad library and accessories. Our skilled design department provides support for architects and other consultants and for customers. It has a rich fund of experience and know-how which can facilitate preliminary planning and final design.



Simple to work

Some penetrations or connections have to be made on site. Isolamin can be cut to shape with a jigsaw. This means that the material is very easy to work.

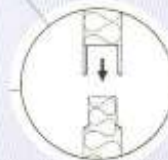
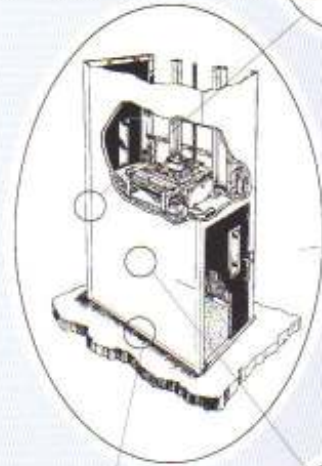
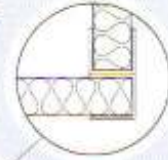
Isolamin Lift Wall Panel Types



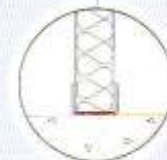
PANEL	PA30PU25	PA33PU25
THICKNESS:	25 mm	25 mm
WEIGHT:	9,3 kg/sq.m	12,8 kg/sq.m
SURFACE/MODULUS WIDTH:	575, 1200 mm	575, 1200 mm
FIRE CLASS:	N.A.	N.A.
THERMAL INSULATION:	1,10 W/sq.m°C	1,10 W/sq.m°C
CORE MATERIAL:	EPS (Expanded polystyrene - 20 kg/cu.m)	
SURFACE MATERIAL:	Hot dipped galvanized steel sheet, Primed sheet, PVC, Galvanized:	
	thickness: 0,5 mm	thickness: 0,7 mm
	White painted: thickness: 0,6 mm	White painted: thickness: 0,6 mm
TOLERANCES:	length: ±5 mm	
	width: ±1 mm	
	thickness: +0/-1 mm	

PANEL	PA30P25	PA33P25
THICKNESS:	25 mm	25 mm
WEIGHT:	14,7 kg/sq.m	16,7 kg/sq.m
SURFACE/MODULUS WIDTH:	575, 1200 mm	575, 1200 mm
FIRE CLASS:	Incombustible	Incombustible
SOUND REDUCTION:	25 dB la lab Est.	29 dB la lab Est.
THERMAL INSULATION:	1,44 W/sq.m°C	1,44 W/sq.m°C
CORE MATERIAL:	Mineral wool - 170 kg/cu.m±10%	
SURFACE MATERIAL:	Hot dipped galvanized steel sheet, Primed sheet, PVC, Galvanized:	
	thickness: 0,5 mm	thickness: 0,7 mm
	White painted: thickness: 0,6 mm	White painted: thickness: 0,6 mm
TOLERANCES:	length: ±5 mm	
	width: ±1 mm	
	thickness: +0/-1 mm	

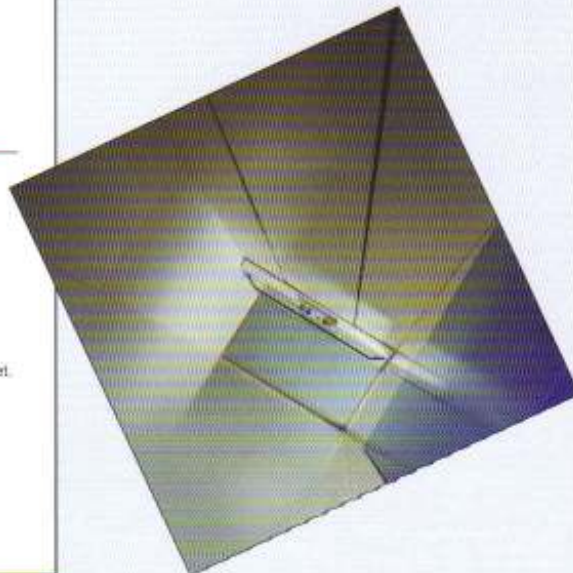
Corner connection



Joint connection



Floor connection





HEAD OFFICE AND FACTORY

Norra Tallvik

S-956 32 Överkalix
SWEDEN

Phone: +46 926 756 00

Fax: +46 926 756 40

NOISE SEAL LTD, UNIT 20
LEICESTER ROAD IND ESTATE
MELTON MOWBRAY
LEICS LE13 0RQ
TEL:01664 482929 FAX 01664 480678