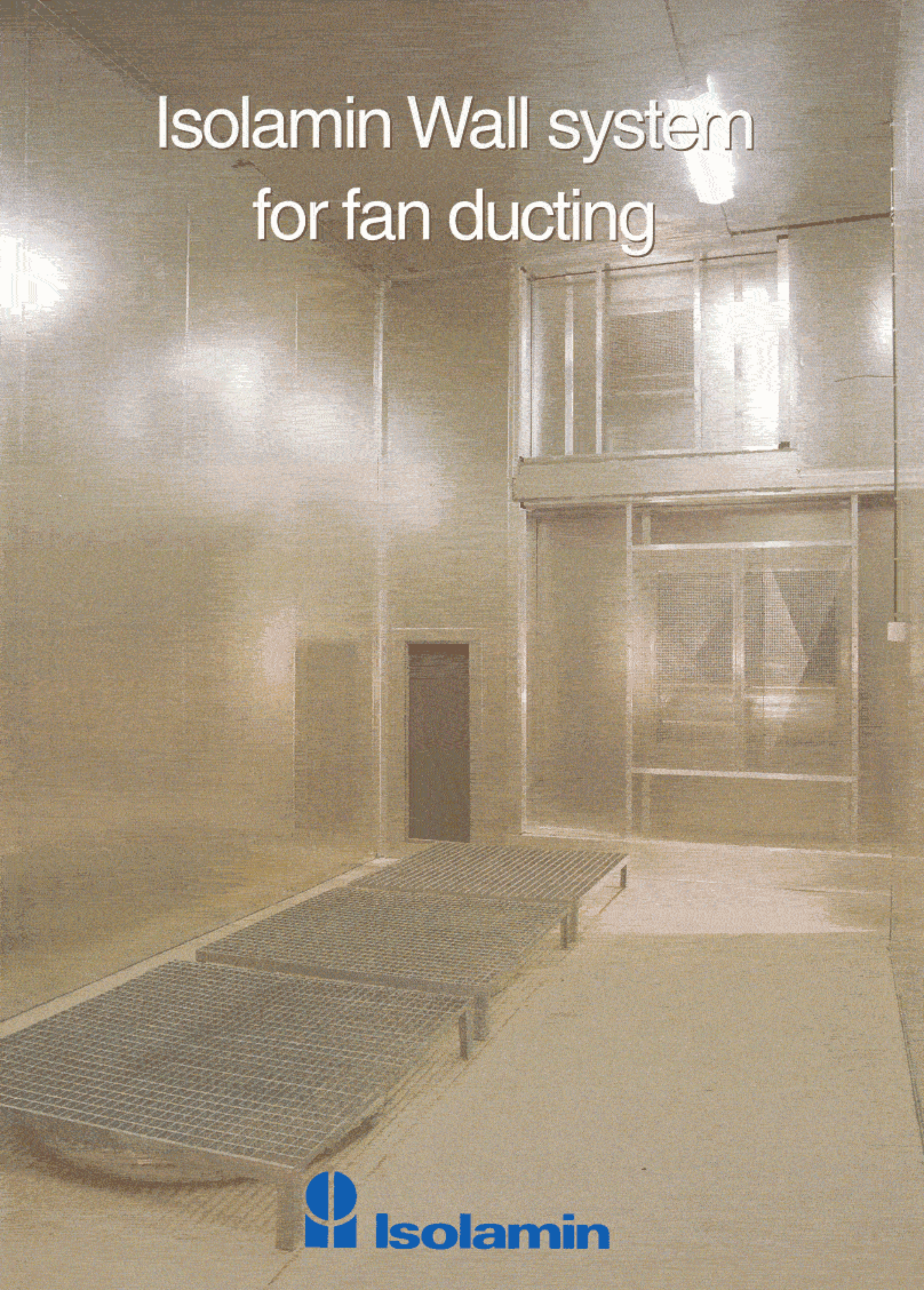


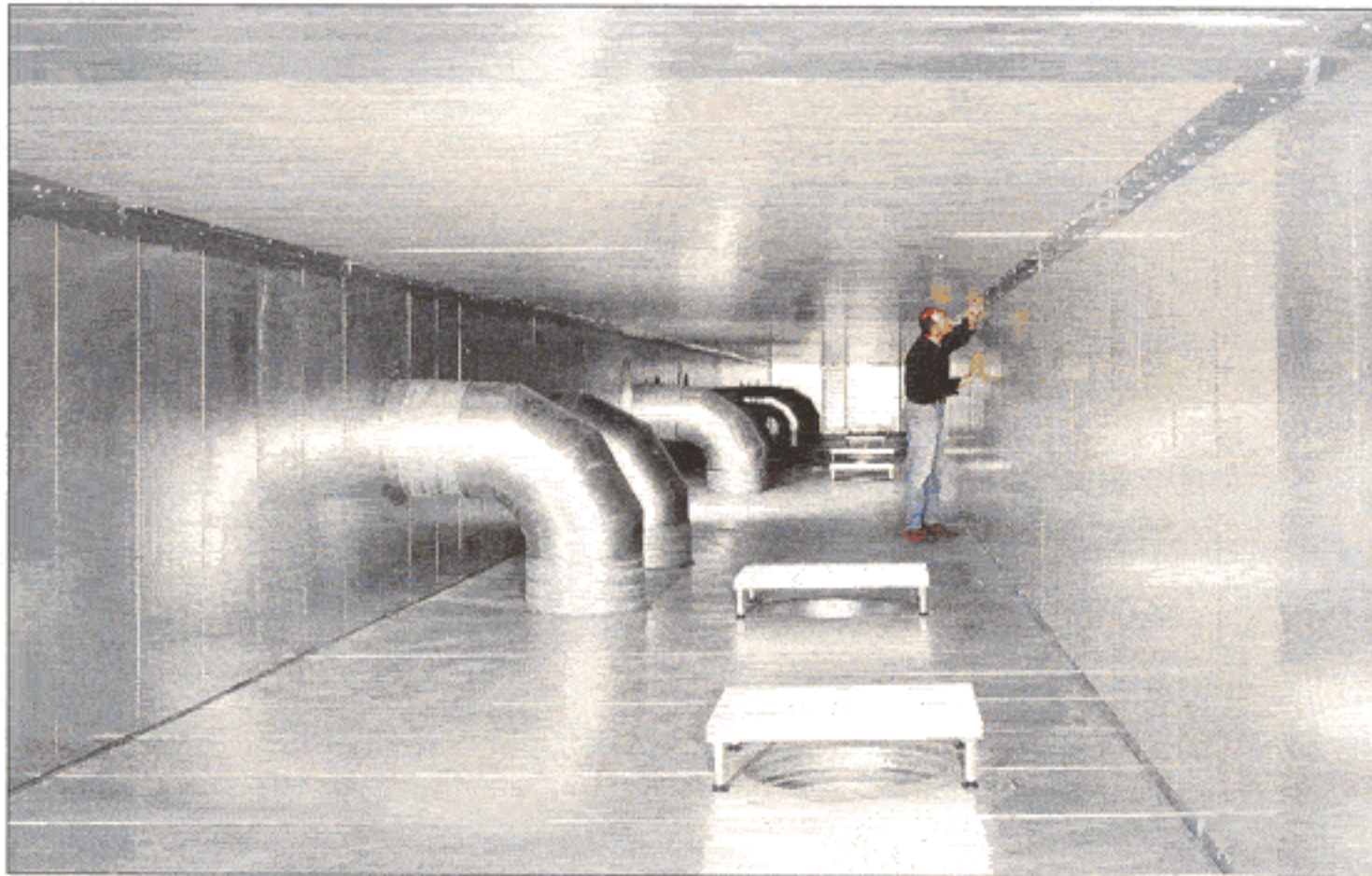
# Isolamin Wall system for fan ducting





# Isolamin Wall system for fan ducting

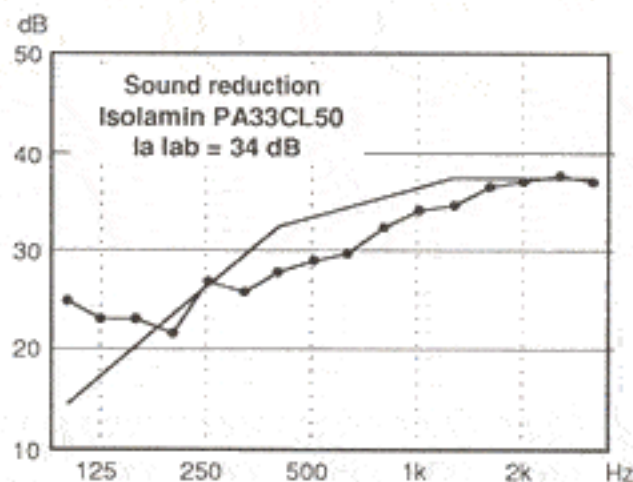
**– a construction giving easy assembly**



*Isolamin fan ducting system gives an easily assembled construction for floor, wall and roof and is suitable for different fan ducting systems. Our main demands for the construction of fan ducting is that it must be leakproof, strong, fire-resistant and have good sound and heat insulation. Through extensive trials and testing, Isolamin have produced a comprehensive fan ducting system adapted for different environments and demands.*

### **Fire resistant construction with flameproof surface layer**

All components in the Isolamin fan ducting system are non-inflammable. The surface layer meets the demands for flameproof surface layers, class 1. Panels with a thickness of 50 mm meet fire class EI 30 and thickness 80 mm and 100 mm meet class EI 60.

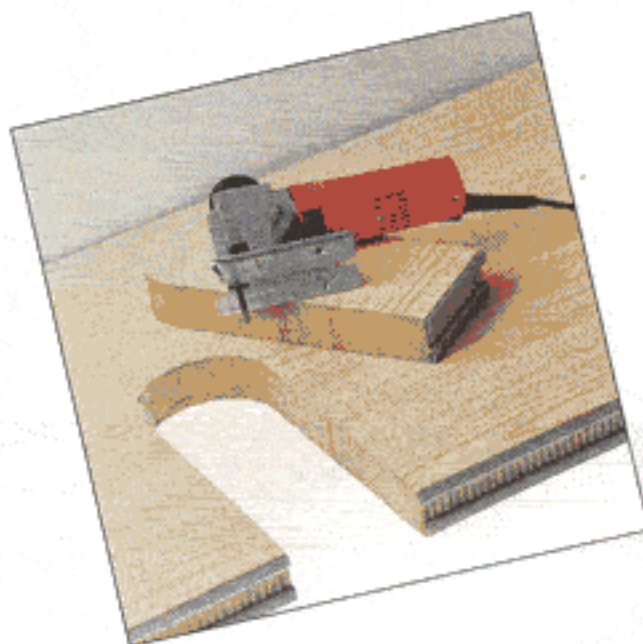


### **High sound reduction**

Isolamin have conducted extensive sound tests on panels and have achieved good results with our special construction.

### **High strength**

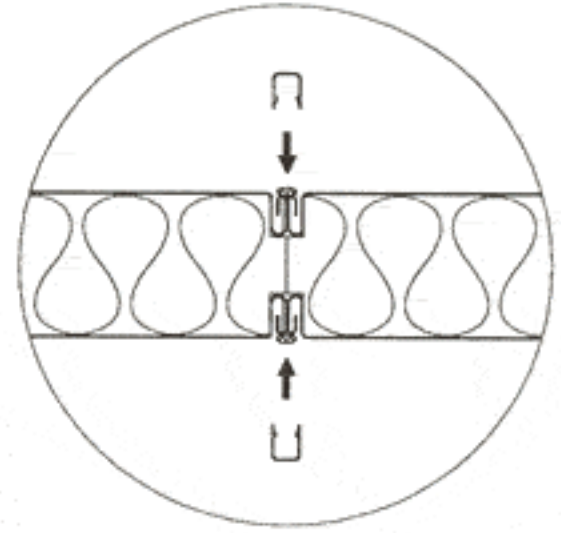
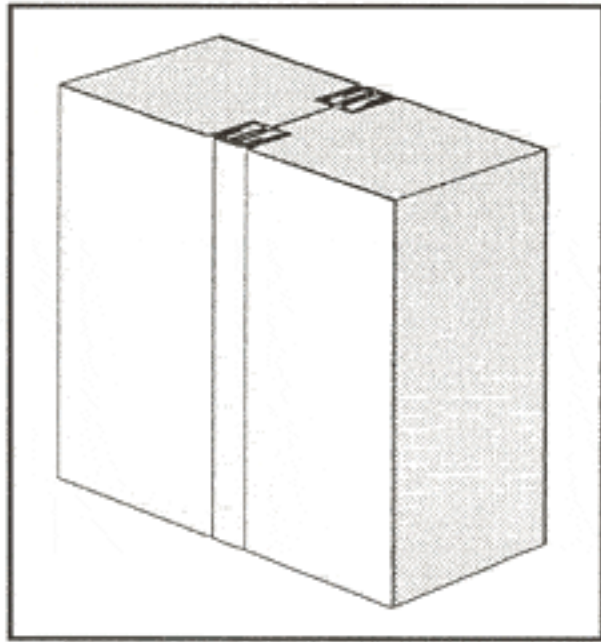
Isolamin's fan ducting panels are manufactured with a core of high density mineral wool. This gives very good strength. A traction force of up to 100 kg is required to pull a self tapping screw out of the 0.7 mm sheet-metal. The surface layer of 0.7 mm sheet-metal also gives a good indentation strength. The strength of the sandwich element's is described in the diagrams later.



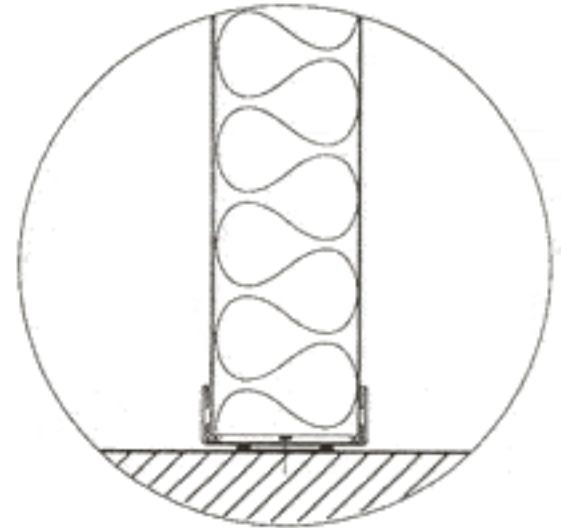
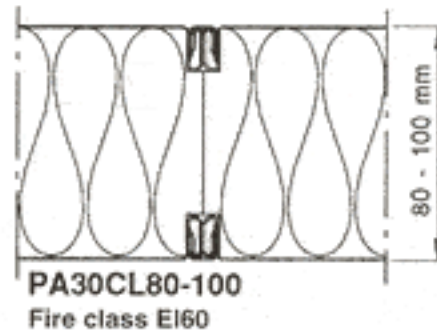
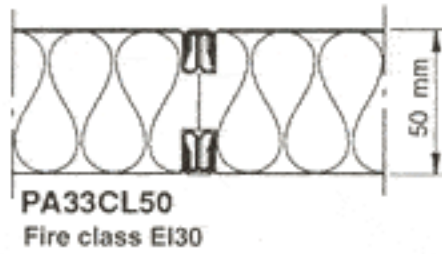
### **Easy working**

When a fan is to be built in it is essential to be able to tailor-make the sound protection. Isolamin's panel can be sawn to shape with a compass saw. Assembly and working is therefore very easy.



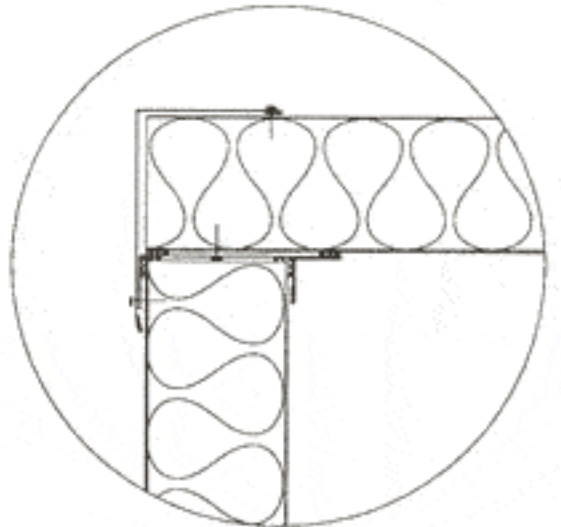


**Lengthwise joint**  
(sealing compound is applied in the joints during assembly)



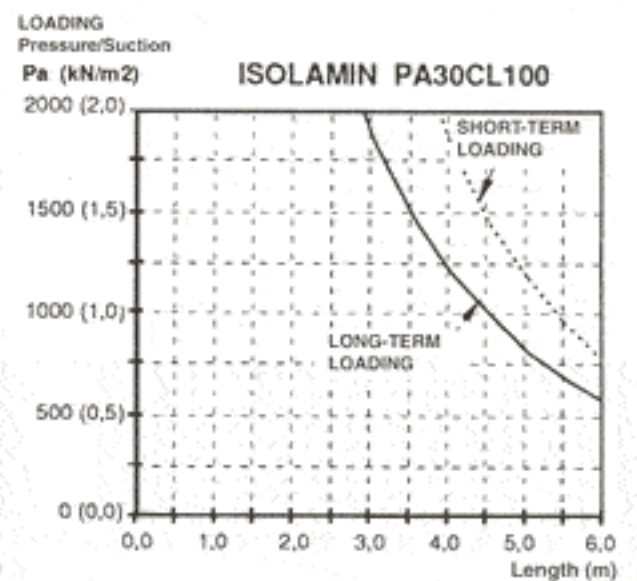
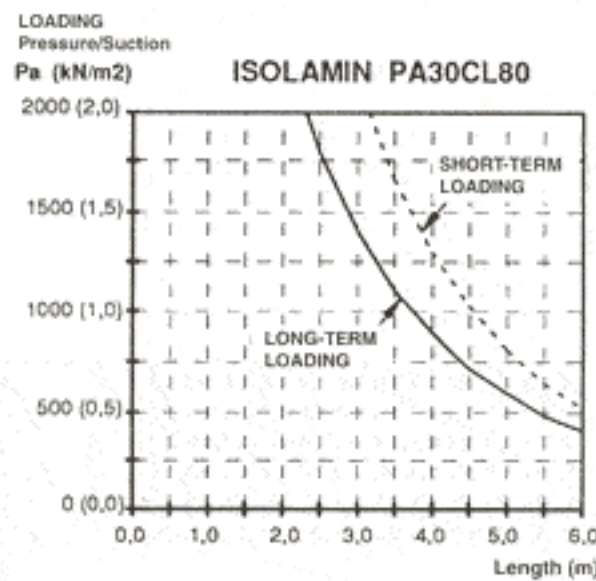
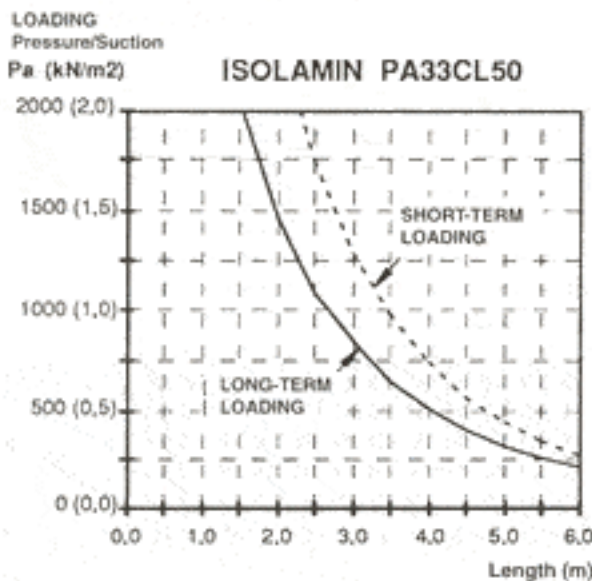
**Floor mounting**

PANEL	PA33CL50	PA30CL80	PA30CL100
Thickness	50 mm	80 mm	100 mm
Weight	20,8 kg/m <sup>2</sup>	24,2 kg/m <sup>2</sup>	27,6 kg/m <sup>2</sup>
Fire class	EI30	EI60	EI60
Sound reduction	34 dB la lab	33 dB la lab	32 dB la lab
Heat transfer fig	0,81 W/m <sup>2</sup> C	0,54 W/m <sup>2</sup> C	0,44 W/m <sup>2</sup> C
Surface layer	Warm galv. steel PVC, Galv/ 0.7 mm	Warm galv. steel PVC, Galv/ 0.5 mm Painted 0.6 mm	
Module width		Painted / 565,1180 mm PVC, Galv. / 590, 1180 mm	
Core material		Mineral wool 170 kg/m <sup>3</sup> +/- 10%	
Tolerances		Length ± 5 mm Width ± 1 mm Thickness +0 / -1 mm	



**Corner joint**  
(also used as roof/wall joint)

**PRESSURE/SUCTION LOADING OF WALLS:**







**HEAD OFFICE / FACTORY**

**Isolamin AB**  
**S-956 32 Överkalix, Sweden**  
**Tel. +46 (0)926 756 00**  
**Fax +46 (0)926 756 40**