



Isolamin

Fan-room wall with door

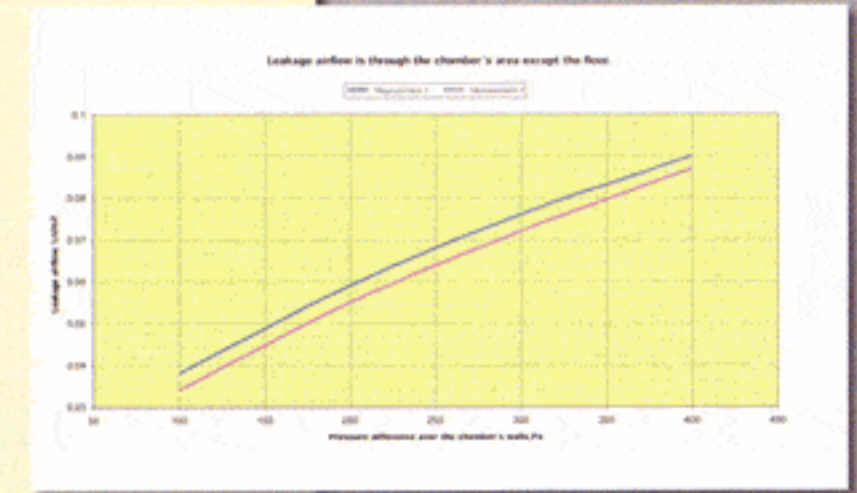
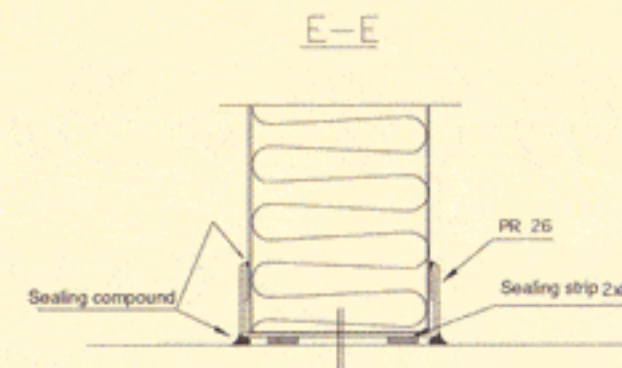
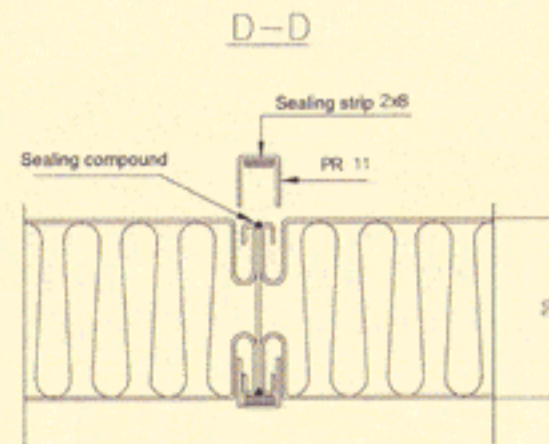
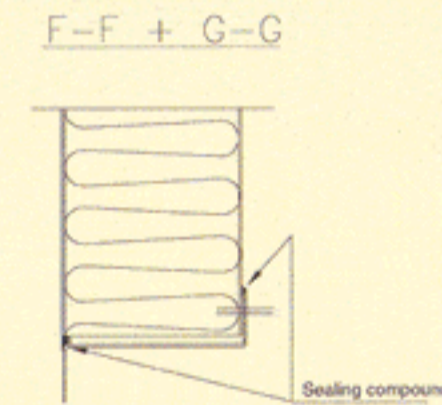
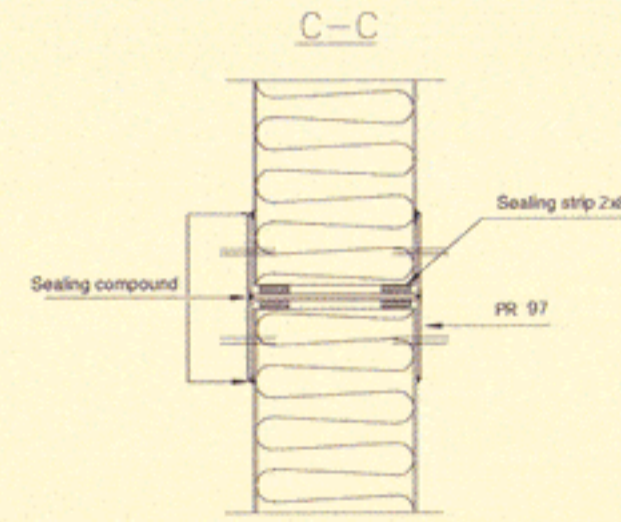
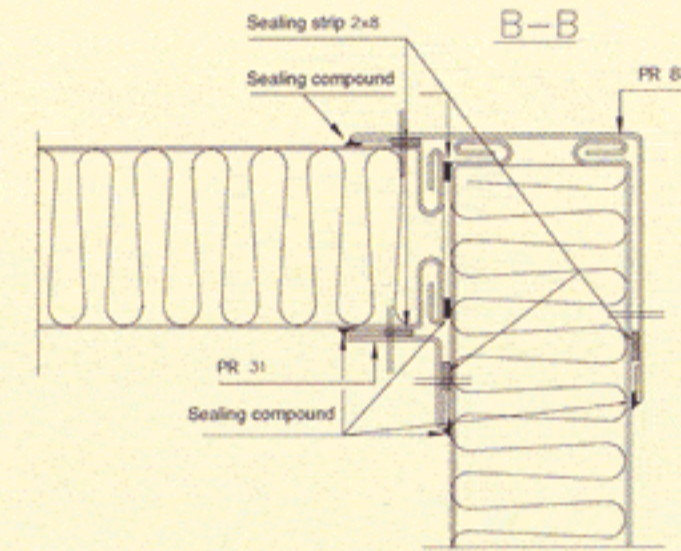
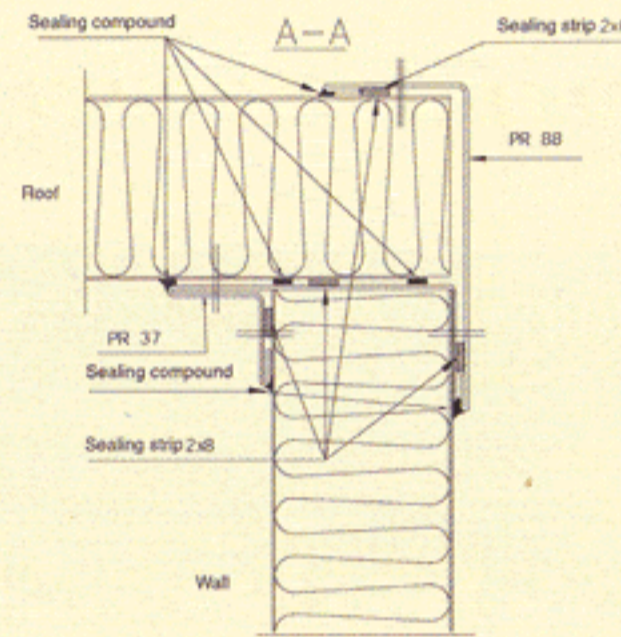
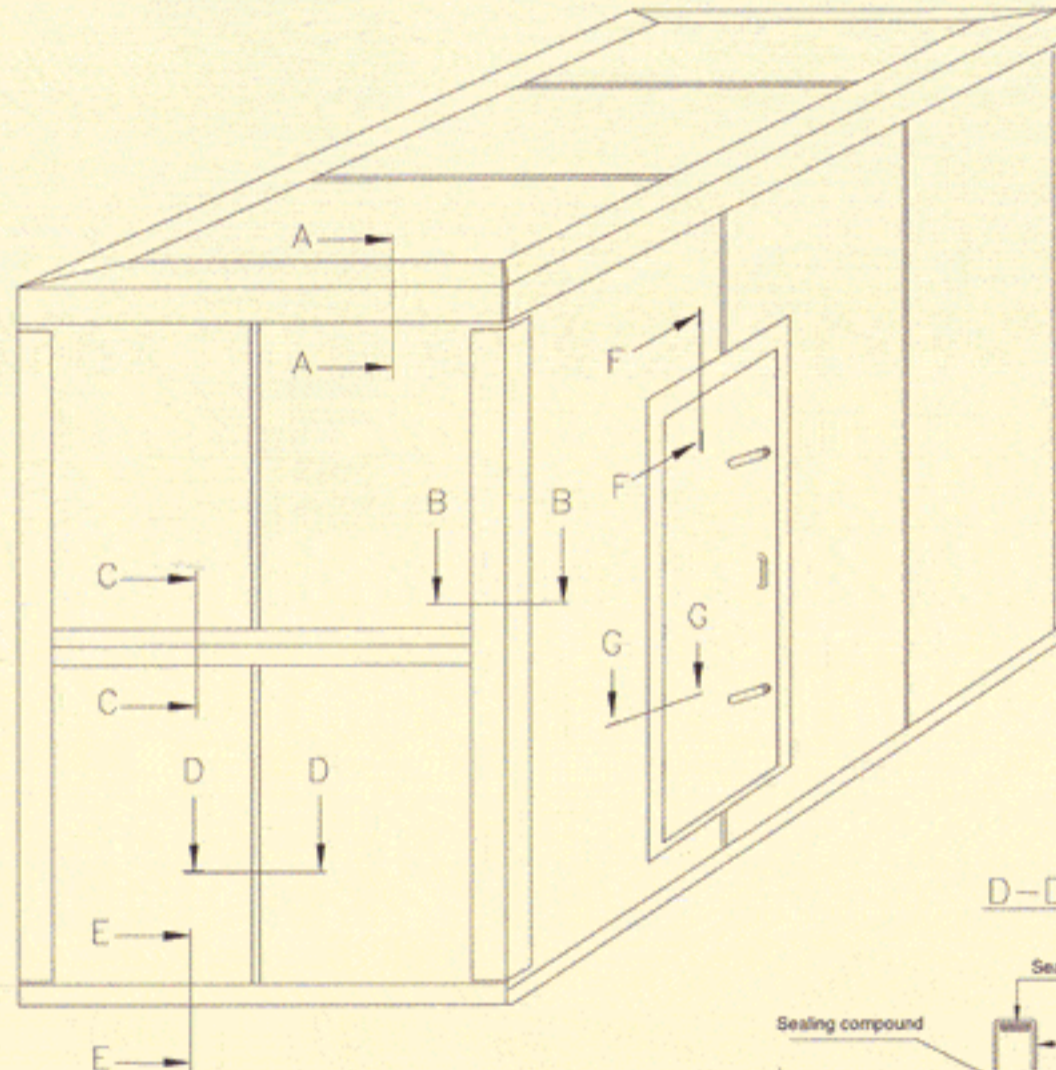
approved in pressure test Class C in accordance with EU standards PREN -1507 (highest class)

NEW!!!

The length of the section at the connection to another section shall be adjusted so that there is an open slot of 2-3 mm between the sections and is sealed with sealing compound.

To secure section to panel, use screw: Structural sheet metal screw 4.8 x 19 mm with escutcheon plate c/c 300 mm

Panel PA33CL-50 mm used in test.
Panel PA33CL-80 mm can also be used but sections change with thickness.



Joint system C

